



**Badger Meter**

## Industrial Turbo Meters

Sizes 2" through 6"

### DESCRIPTION

The Badger Meter Industrial Turbine is a rugged, reliable meter ideally suited for chemical or industrial fluid applications. Its compact size and ease of serviceability without removal from the line, coupled with a choice of materials, make this a cost-effective selection. Designed with performance in mind, the meter provides a high level of accuracy over a wide flow range with a minimum of pressure loss.

The Badger Meter Turbine is available in line sizes of 2", 3", 4" and 6" with a choice of flange ratings and three different body materials, including stainless steel. Its unique straight-through flow profile and ceramic bearing design optimize performance.

To complement the meter, Badger Meter offers a complete line of accessories that includes mechanical, electromechanical and state-of-the-art electronic transmitters, totalizers, indicators and process controllers.

### OPERATION

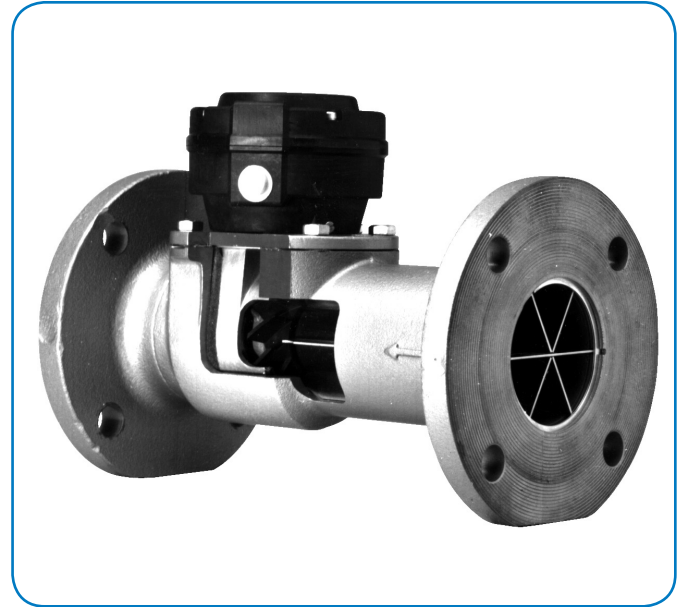
The Badger Meter Industrial Turbine is a volumetric liquid flow meter that works on the time proven principle of a rotor turning at an angular velocity proportional to the fluid velocity through the turbine. The meter has straightening vanes and a nose cone in the inlet side to minimize upstream turbulence and direct the flow to the rotor effectively. Electronic pickups generate signals from the rotor magnet. The signal is translated to 4...20 mA and/or open collector-transistor pulse outputs. Mechanical pickups and electromechanical outputs are also available.

### APPLICATIONS

The Turbine meter is used in a wide range of fluid applications covering from water to oils, solvents to acids. The meter is used in water treatment systems, loading and unloading of tankers or rail cars, batching systems, or simply inventory control of a process fluid. Anywhere high volume and/or high flow rates are sometimes required in the application, the Turbo meter is likely the right choice.

### FEATURES

- Long lasting ceramic bearings
- Simple in-line serviceability
- Three housing materials available
- 1.5% accuracy
- 0.25% repeatability
- Low pressure loss



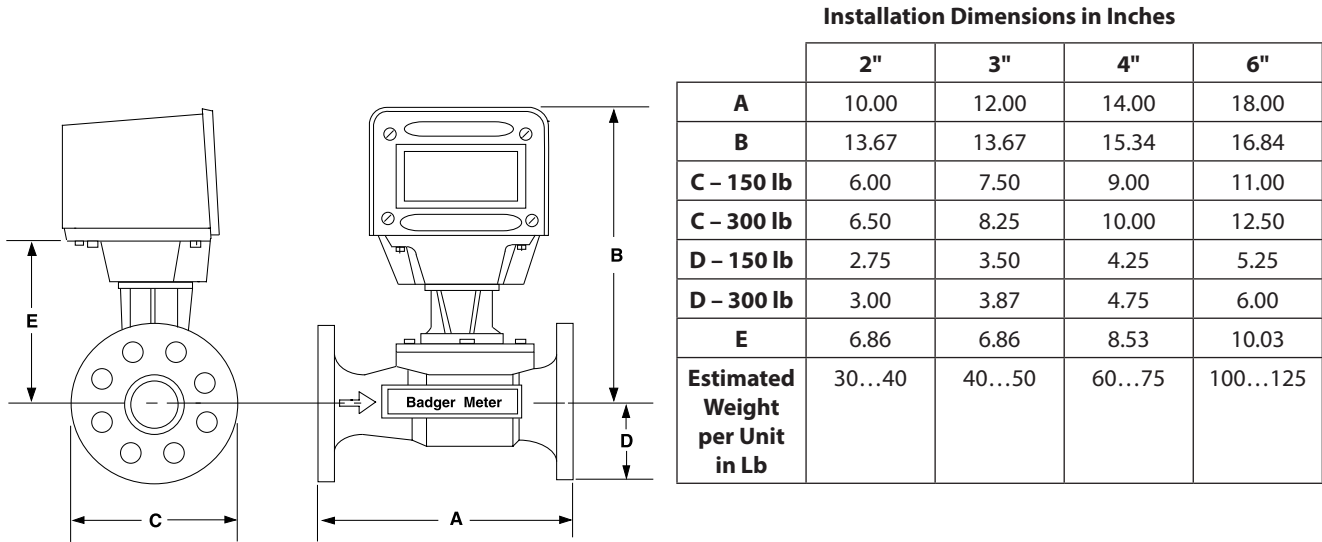
### SPECIFICATIONS

<b>Accuracy</b>	± 1.5%	
<b>Repeatability*</b>	± 0.25%	
<b>Temperature Range</b>	-30...250° F	
<b>Flow Range – GPM</b>	2"	8...160
	3"	10...350
	4"	25...1000
	6"	40...2000
<b>Maximum Operating Pressure</b>	Standard: 125...150 psi Optional: 250...300 psi (Cast iron/bronze only)	
<b>Flange Face Configurations (ANSI Standards)</b>		
<b>Flat Faced Flanges</b>	125 lb cast iron, 150 lb and 300 lb bronze housings	
<b>Raised Face Flanges</b>	250 lb cast iron, 150 lb stainless steel housings	
<b>Materials</b>		
<b>Housing</b>	Cast iron, bronze, 316 stainless steel	
<b>Head</b>	Bronze, stainless steel	
<b>Rotor and Nose Cone</b>	Ryton	
<b>Bearings</b>	Ceramic	
<b>Straightening Vanes</b>	316 stainless steel	
<b>O-Ring and Tetraseal</b>	Buna N (standard), EPR, Viton	
<b>Head Gasket</b>	<ul style="list-style-type: none"> <li>• Nitrile binder (used with Buna N seals)</li> <li>• Chloroprene binder (used with EPR and Viton seals)</li> </ul>	

\* Reading over full range tested with potable water at 60° F.

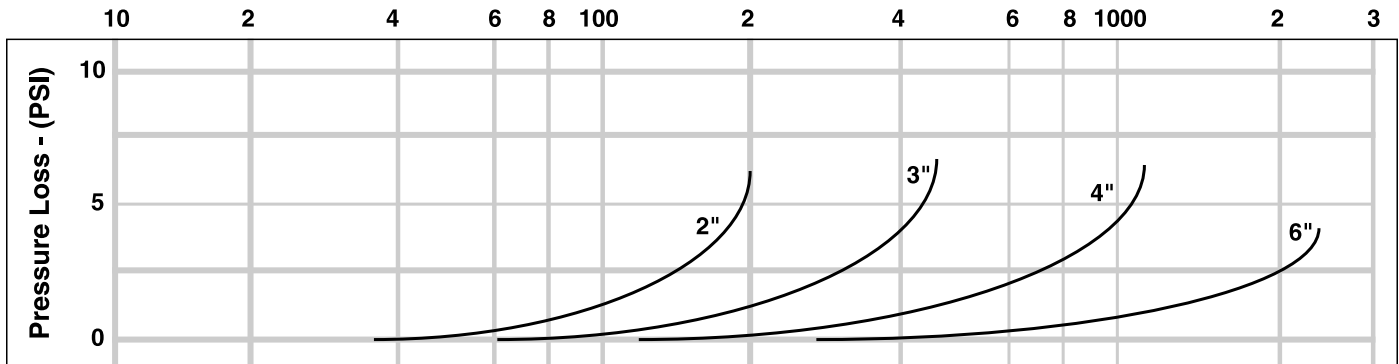
## DIMENSIONAL DRAWINGS

Dimensions shown are of meter with a PC100 meter mount. Dimensions for other system configurations will vary. Please consult with the factory.



## PRESSURE LOSS CHART

Rate of flow is in gallons per minute.



Trademarks appearing in this document are the property of their respective entities.

Due to continuous research, product improvements and enhancements, Badger Meter reserves the right to change product or system specifications without notice, except to the extent an outstanding contractual obligation exists. © 2012 Badger Meter, Inc. All rights reserved.

[www.badgermeter.com](http://www.badgermeter.com)

**The Americas | Badger Meter** | 4545 West Brown Deer Rd | PO Box 245036 | Milwaukee, WI 53224-9536 | 800-876-3837 | 414-355-0400  
**México | Badger Meter de las Americas, S.A. de C.V.** | Pedro Luis Ogazón N°32 | Esq. Angelina N°24 | Colonia Guadalupe Inn | CP 01050 | México, DF | México | +52-55-5662-0882  
**Europe, Middle East and Africa | Badger Meter Europa GmbH** | Nurtinger Str 76 | 72639 Neuffen | Germany | +49-7025-9208-0  
**Czech Republic | Badger Meter Czech Republic s.r.o.** | Maříkova 2082/26 | 621 00 Brno, Czech Republic | +420-5-41420411  
**Slovakia | Badger Meter Slovakia s.r.o.** | Racianska 109/B | 831 02 Bratislava, Slovakia | +421-2-44 63 83 01  
**Asia Pacific | Badger Meter** | 80 Marine Parade Rd | 21-04 Parkway Parade | Singapore 449269 | +65-63464836  
**China | Badger Meter** | Rm 501, N° 11 Longyue Apartment | N° 180 Longjin Rd, Jiuting Songjiang District | Shanghai, China | 201615 | +86-21-5763 5412